

ArcGIS® for Local Government

Making the Most of Your GIS Investment



“By using the ArcGIS for Local Government templates, we estimate we are saving at least 200 person-hours in programming and development for each application we launch.”

Ian A. Wint, GIS Manager
City of Fort Lauderdale, Florida

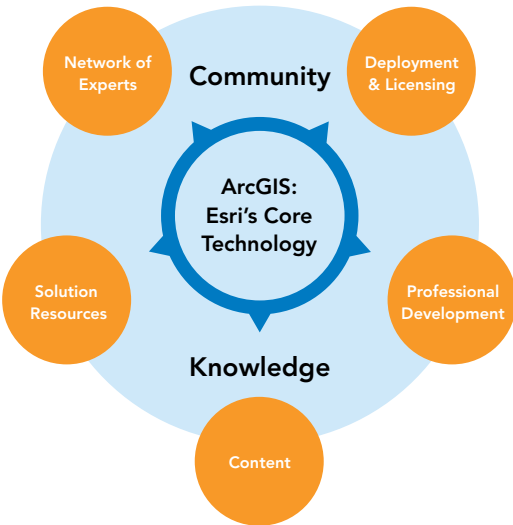
Inspiring Solutions for Local Government

ArcGIS® for Local Government is part of Esri’s solutions initiative to provide best practices and resources based on years of experience working with governments. At the core of this initiative is Esri’s complete ArcGIS platform, which scales to the way governments function—from data creation and collection to planning, analysis, and decision making.

ArcGIS for Local Government provides a multitude of resources that complement Esri’s core technology and set the foundation for making the most of geographic information system (GIS) investments. The resources are designed to get an organization’s geospatial technology system up and running quickly to speed authoring, analyzing, managing, and sharing of geospatial information. With the help of these solution resources, data is transformed into useful, intelligent maps and applications that convey the most up-to-date knowledge in meaningful ways.

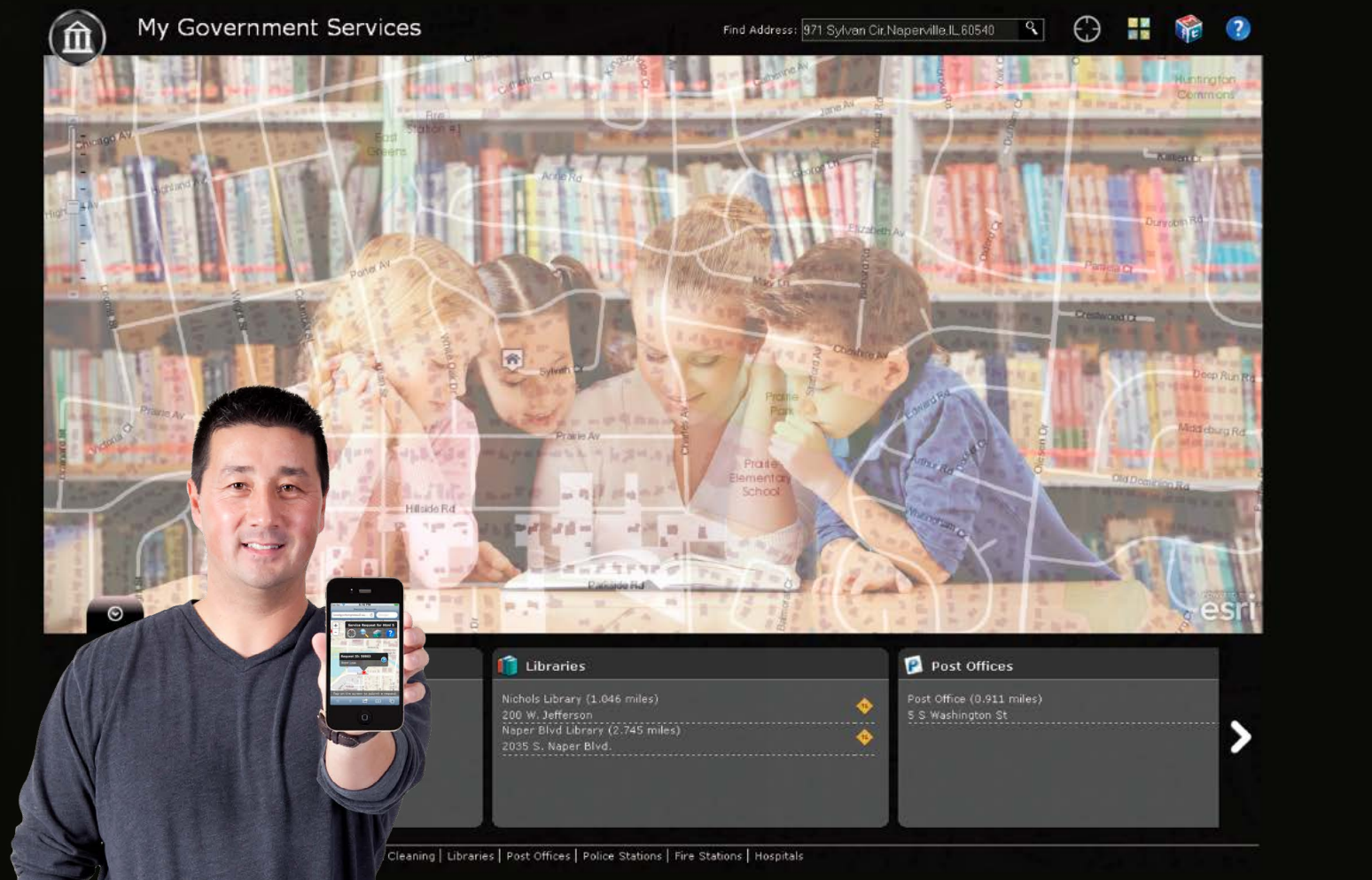
An integral part of ArcGIS for Local Government is templates, which are available free of charge, to help governments build applications. These customizable

applications are built on top of Esri’s core software. A network of professionals is also available to support efforts to implement GIS solutions that meet both the needs of staff and the growing expectations of citizens.



ArcGIS for Local Government





My Government Services is one of the customizable applications available on ArcGIS for Local Government that helps residents locate a government facility and obtain information about services.

Applications for All

Applications in ArcGIS for Local Government are part of ArcGISSM Online, Esri's collaborative, cloud-based content management system for maps, applications, data, and geographic information. These knowledge-based templates from Esri and its partners are customized for a multitude of disciplines and initiatives and include Code Violation for iPad, Park and Recreation Finder, and Land Use Public Notification.

Existing application templates are constantly updated, and new ones are added. Currently, there are templates available for these divisions:

- Water utilities
- Land records
- Elections
- Planning and development
- Public safety
- Public works

“The ArcGIS for Local Government initiative has enabled our organization to deploy high-quality, focused geospatial web applications to the public and our employees in a quick and cost-effective manner. The free map and app templates provided by Esri have provided immense value by reducing both the time and costs required [for] application development.”

Sally Price, GIS Coordinator
City of Southfield, Michigan

Resources You Can Use

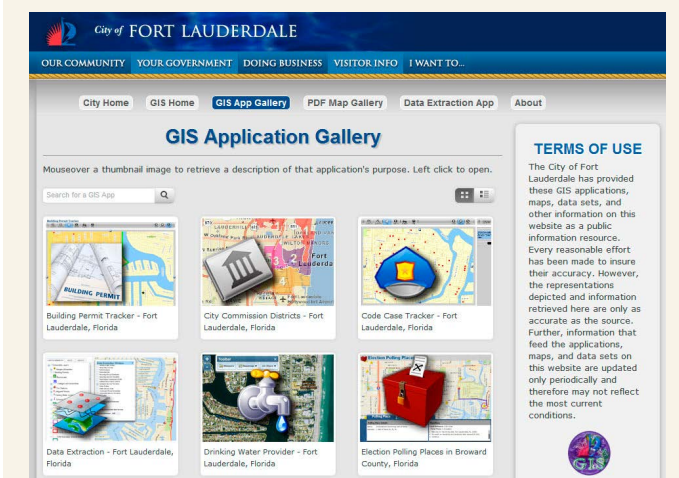
ArcGIS for Local Government includes the Local Government Information Model that keeps data organized and ready to use in applications. Local government basemaps provide a rich foundation for applications. Workflows provide clear paths for collecting parcels and related land records information as well as data on buildings, streets, addresses, administrative boundaries, and infrastructure.

The continually growing selection of application templates supports a full range of municipal functions. Public-facing applications give citizens a direct view into operations and an easy way to communicate with government. Mobile applications keep field staff connected.

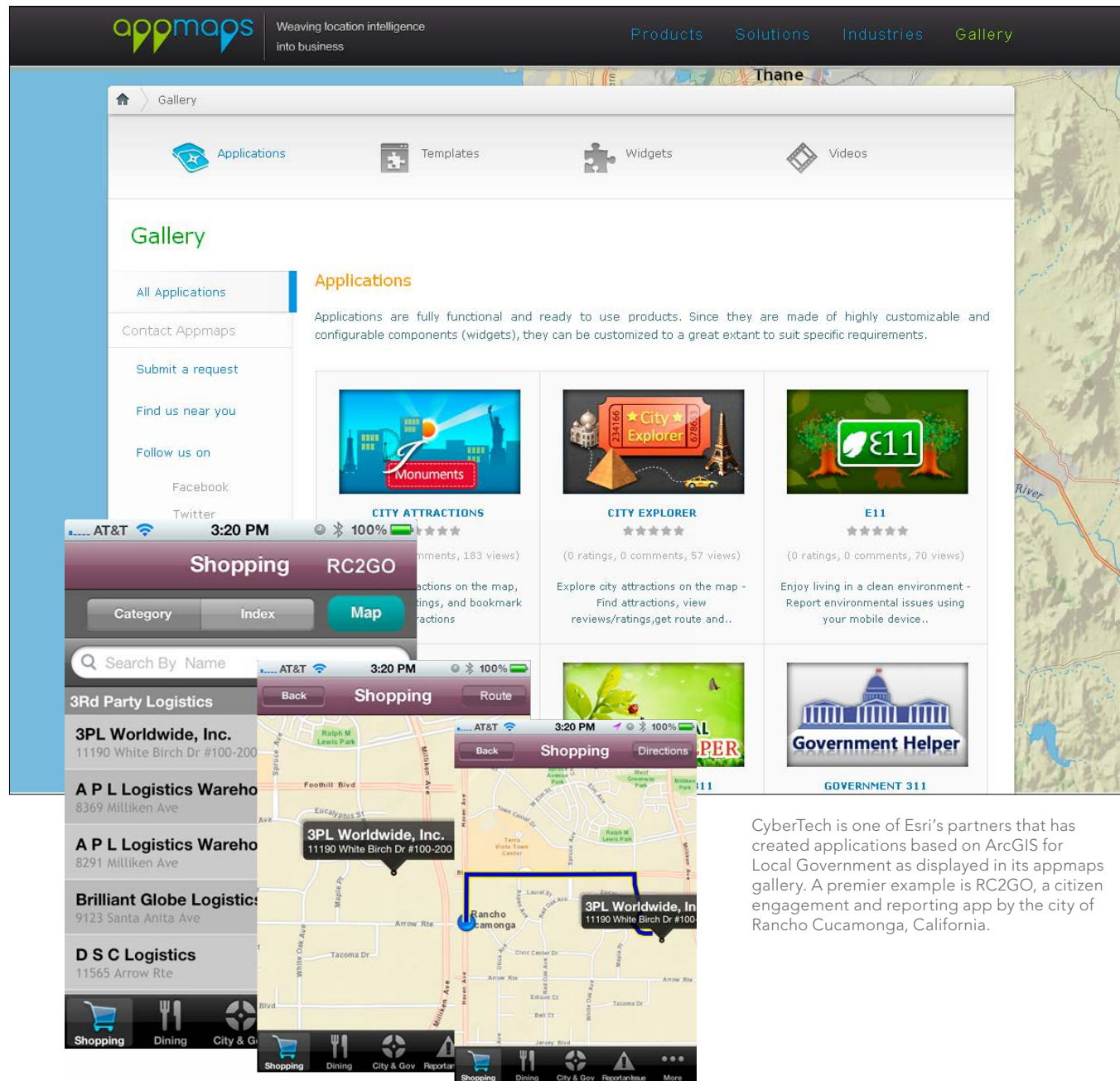
Application templates support the following:

- Data creation and collection
- Analysis and planning
- Field mobility
- Operations
- Citizen engagement

A Maps and Apps Gallery template provides a place to house GIS applications so they are easy for staff and citizens to access.



The City of Fort Lauderdale's GIS Application Gallery



CyberTech is one of Esri's partners that has created applications based on ArcGIS for Local Government as displayed in its appmaps gallery. A premier example is RC2GO, a citizen engagement and reporting app by the city of Rancho Cucamonga, California.

Support for Your Projects

ArcGIS for Local Government provides a network of experts that governments can access to get professional support for GIS projects. This network includes Esri professional services staff, consultants, and partners who have been trained in implementing GIS using ArcGIS for Local Government.

Partners in the ArcGIS for Local Government Specialty Program have created applications based on the ArcGIS for Local Government solution and/or implementation services.

Get Started

Whether you are new to Esri® technology or a longtime user, ArcGIS for Local Government will propel your GIS initiatives forward.

New to Esri GIS?

Visit esri.com/localgov to learn more about implementing the ArcGIS platform in your organization. This platform is available through various tested and government-approved deployment and licensing options. Once you have core ArcGIS software, ArcGIS for Local Government best practices and resources will be available to you at no additional cost.

Already Using Esri's Core Technology?

Whether your organization currently deploys GIS at a small or large scale, you can take advantage of ArcGIS for Local Government resources today to maximize your return on investment. Visit esri.com/arcgisforlocalgov to access best practices, applications, and resources that will extend the reach of your GIS.

Expand Access to ArcGIS Software

In addition to building GIS applications to serve staff and citizens, many governments want to improve access to core ArcGIS software. Esri provides enterprise license agreements (ELAs) to governments of all sizes so they can get more of the ArcGIS software they need. To learn more about ELAs, visit esri.com/ela.

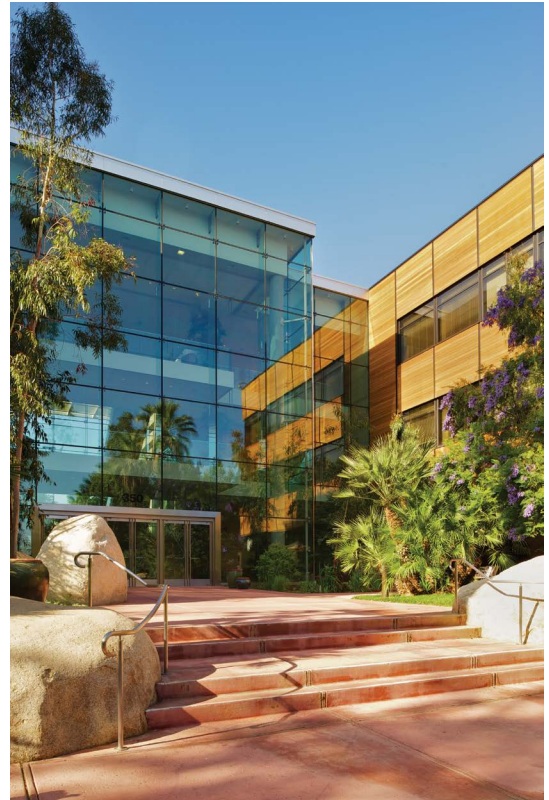
esri.com/arcgisforlocalgov

The screenshot shows the ArcGIS for Local Government website. The navigation bar includes links to Home, Industries, Products, Training, Support, Services, Events, News, and About. The main content area is titled 'ArcGIS for Local Government' and includes a section 'Making the Most of Your GIS Investment'. This section contains a list of benefits and a diagram showing the core technology and its components. Below this is a 'Featured Application Templates' section with images and links for Election Results, Citizen Engagement, Community Planning, Public Land Use, Infrastructure, and Public Works.



Esri inspires and enables people to positively impact their future through a deeper, geographic understanding of the changing world around them.

Governments, industry leaders, academics, and nongovernmental organizations trust us to connect them with the analytic knowledge they need to make the critical decisions that shape the planet. For more than 40 years, Esri has cultivated collaborative relationships with partners who share our commitment to solving earth's most pressing challenges with geographic expertise and rational resolve. Today, we believe that geography is at the heart of a more resilient and sustainable future. Creating responsible products and solutions drives our passion for improving quality of life everywhere.



Contact Esri

380 New York Street
Redlands, California 92373-8100 USA

1 800 447 9778
T 909 793 2853
F 909 793 5953
info@esri.com
esri.com

Offices worldwide
esri.com/locations

Copyright © 2017 Esri. All rights reserved. Esri, the Esri globe logo, ArcGIS, @esri.com, and esri.com are trademarks, service marks, or registered marks of Esri in the United States, the European Community, or certain other jurisdictions. Other companies and products or services mentioned herein may be trademarks, service marks, or registered marks of their respective mark owners.