

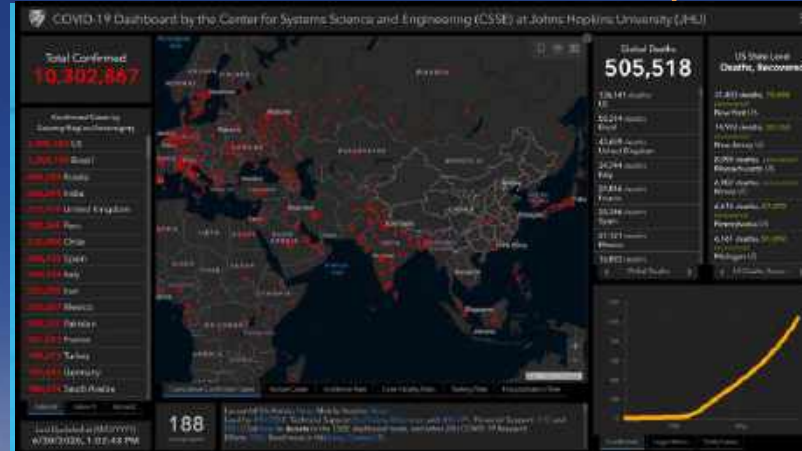
Peran Penting Geospasial di era New Normal dan Pemulihan Ekonomi

Dr. Achmad Istamar

CEO Esri Indonesia



Visi Esri : Memberikan Solusi untuk Permasalahan Dunia lewat Geospasial



Kami percaya melalui Geospasial kehidupan dunia yang lebih baik dapat terwujud

Pengguna Esri di Dunia

Menjawab tantangan dunia yang makin dinamis

Environment

Science & Technology

Economic Development

Infrastructure

Natural Resources

Pollution

Transparent Government

Natural Disasters

Water Resources

Urbanization & Development

Human Health

Nature Conservation

Energy

Agriculture

National Security

Climate Change

Business

Social Conflicts

Making a Difference

- 1,100 National Government Agencies
- 2,200 States & Regional Agencies
- 20,000 Cities & Local Governments
- 30,000+ Businesses
- 3,300 Utilities
- 5,000 Natural Resources Companies
- 7,000 Colleges & Universities

Transparansi Data Pendukung Kebijakan Publik : Manfaat Geospasial bagi Masyarakat Indonesia

Open Data

One Map Portal



Badan Informasi Geospasial Indonesia



Citarum Open Data Indonesia

GIS Taru



Ministry of Agrarian Affairs and Spatial Planning/National Land Agency - Indonesia

Demographic Data



Ministry of Home Affairs Indonesia

Statistics Indonesia



Badan Pusat Statistik Indonesia

Energy One Map



Ministry of Energy and Mineral Resources Indonesia

Geoportal Pusfatja



LAPAN (Lembaga Penerbangan dan Antariksa Nasional) Indonesia

Tangerang Live



City of Tangerang Indonesia

Mapping & GIS Portal

Forestry Geoportal



Ministry of Environment and Forestry Indonesia

Utility Management



PLN (Perusahaan Listrik Negara) Indonesia

Citizen Engagement

Jakarta Satu



City of Jakarta Indonesia

Geoportal Depok



City of Depok Indonesia

Boga Peta



Bogor Indonesia

Enterprise Portals

Mining & Exploration



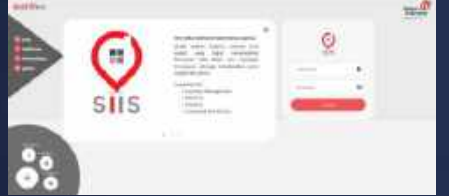
Freeport Indonesia

Banking




Bank Muamalat Indonesia)

Sales Information System



Indihome Indonesia

A world map with a dark background, showing the distribution of COVID-19 cases. Red squares of varying sizes represent the number of cases in each country. The largest square is in the United States, with a value of 229,318. Other large squares are in the United Kingdom (263,827), India (186,514), and the United Kingdom (71,412). The text 'COVID-19 adalah tantangan massif bagi masyarakat dan dunia usaha dalam Skala Global' is overlaid on the right side of the map. The text is in white, bold, and underlined. The map also shows labels for various countries and oceans.

**COVID-19 adalah
tantangan massif
bagi masyarakat dan
dunia usaha dalam
Skala Global**

229,318

57,115

263,827

19,447

34,405

13,291

21,411

92,900

18,655

22,398

10,534

18,558

30,409

19,326

107,760

71,412

11,421

186,514

71,412

22,435

26,778

13,865

52,717

Komunitas Geospasial Indonesia merespon aktif

Saling berkolaborasi, bertukar Informasi, Metode, Data dan Aplikasi

COVID – 19



... Addressing the Challenges at all scales

Geospasial dan Penanganan Covid-19 di Indonesia

Portal GIS InaCOVID-19 oleh BNPB



<http://bnpb-inacovid19.hub.arcgis.com>

Peta Analisis Risiko Pandemi COVID-19 oleh BIG



<https://covid19.big.go.id/>

Pemerintah Kota Tangerang



<https://maps.tangerangkota.go.id/corona/>

BPBD Wonogiri



<https://east->

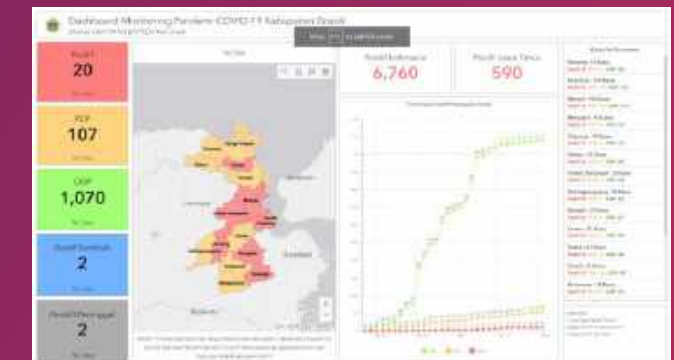
[ina.onemap.id/portal/apps/opsdashboard/index.html#/b632f7e3ac3748ceb88a1f04fa5eeab9](https://east-ina.onemap.id/portal/apps/opsdashboard/index.html#/b632f7e3ac3748ceb88a1f04fa5eeab9)

Pemprov DKI Jakarta



<https://corona.jakarta.go.id/id/peta-persebaran>

Kabupaten Gresik



<https://east->

[ina.onemap.id/portal/apps/opsdashboard/index.html#/ba5bf0d0462646188ade44a7a7835ed7](https://east-ina.onemap.id/portal/apps/opsdashboard/index.html#/ba5bf0d0462646188ade44a7a7835ed7)

Kerjasama Penelitian dengan >34 PTN dan PTS di Indonesia



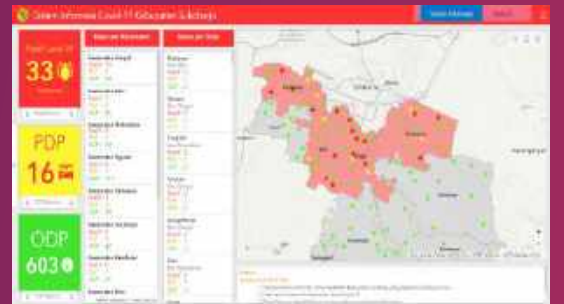
UNSYIAH



BINUS



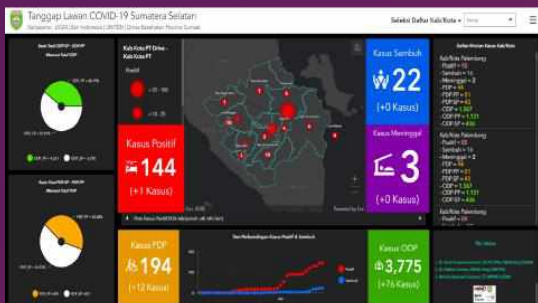
UGM



UNDIP



ITS



UIGM



UPI



ITB



UB



UI



UNHAS

Apa yang telah dilakukan?

1. Pengawasan
2. Pelaporan
3. Analisis

Siapa saja yang dibantu?
Civitas Akademik, Pemerintah Daerah, & Publik



Kerjasama Covid-19 Universitas Indo Global Mandiri - Kota Palembang



Kegiatan Pendistribusian Bantuan

The government staff is actively monitoring



Using Survey123 to submit and report assistance for the people



Assessing the most vulnerable populations based on comorbidities

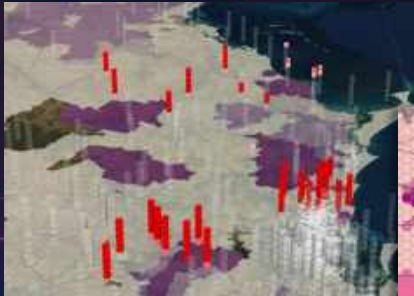
Share and report COVID19 help distribution to general public



Palembang City is leveraging ArcGIS to keep the city running

Inovasi Geospasial Dibutuhkan Untuk Mendukung Program PEN

Agricultural Labor Demand



Department of Agriculture and Fisheries
Australia

Labor Assessment

Laborshed Modeling



Juniper Solutions
Ohio

Grocery Store Accessibility



Fujitsu
Japan

Site Selection

Retail Site Selection



Meijer
Michigan

Optimal Routing & Scheduling



SynerGIS
Vienna

Distribution Center Siting



Indonesia

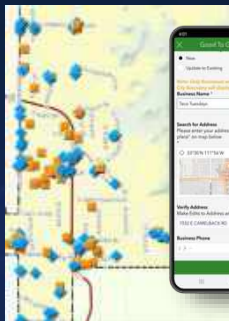
COVID-19 Response

Business Loan & Grant Targeting



City of St. Louis
Missouri

Open for Business



City of Scottsdale
Arizona

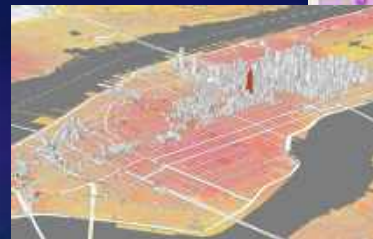
Real Estate

Available Real Estate



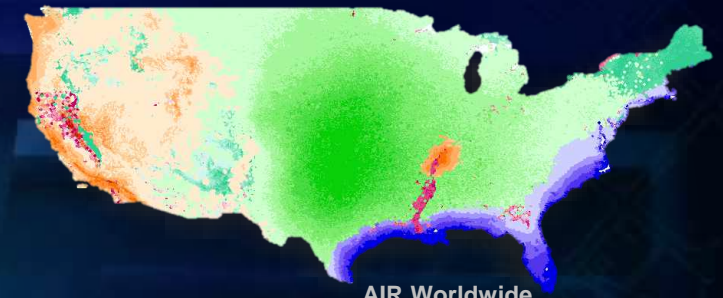
Oklahoma Department of Commerce
Oklahoma

Commercial Real Estate Availability



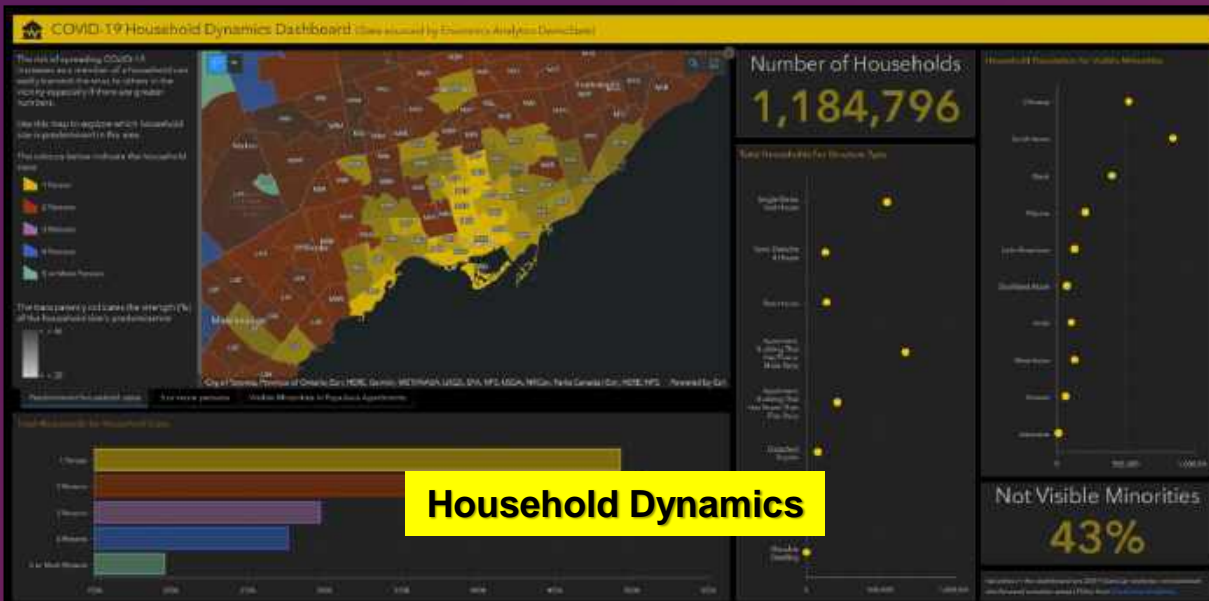
Savills North America
New York

Insurance Risks



AIR Worldwide
US

Digunakan untuk memahami profil masyarakat



Di era New-Normal Geospasial menjadi semakin penting

Transforming Our Understanding. . .
. . . And Our Collaboration



Geospatial
Infrastructure

Society

Organizations

Creating Holistic Solutions

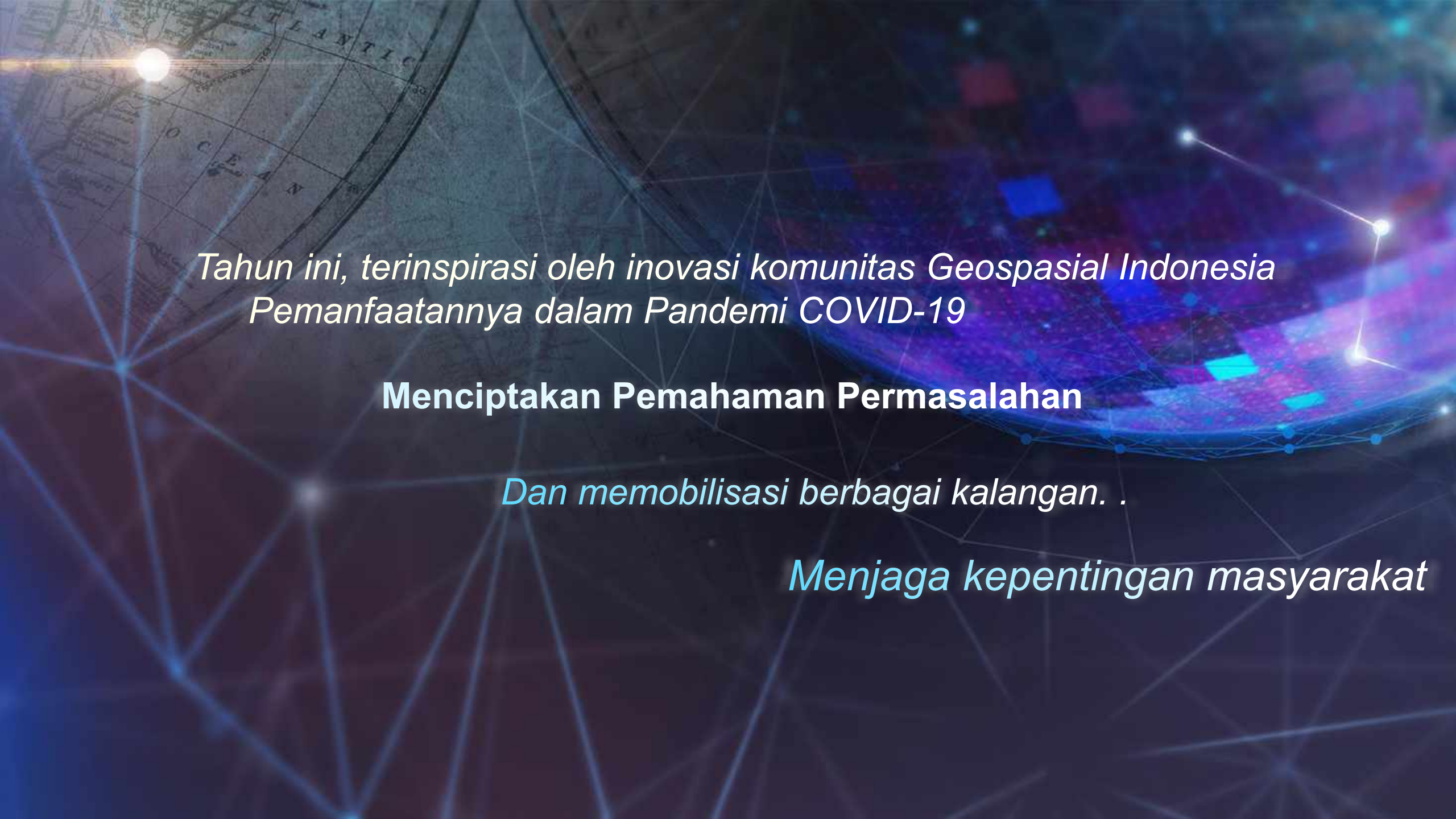
Projects

Understanding Complexity

Improving Communication
& Collaboration

Organizing Work

Addressing Our
Greatest Challenges
In the New Normal



*Tahun ini, terinspirasi oleh inovasi komunitas Geospasial Indonesia
Pemanfaatannya dalam Pandemi COVID-19*

Menciptakan Pemahaman Permasalahan

Dan memobilisasi berbagai kalangan. .

Menjaga kepentingan masyarakat

