

# Geo-Innovation Challenge

Geo-enabling data-driven decisions  
in the face of the new normal

Enter the competition

# Background

With the COVID-19 pandemic's growing impact on our lives, an increasing number of organisations are undertaking innovative approaches to help their communities be more resilient in the face of the pandemic and other real-world challenges.

The Geo-Innovation Challenge is a competition that seeks to explore and promote the groundbreaking geospatial solutions that is helping the following local industries adapt and embrace "the new normal"

If you've innovatively used GIS – across activities in the following industries – then we want to hear from you!

|  |   |  |   |   |
|--|---|--|---|---|
| <br>PETROLEUM | <br>MINING | <br>AGRICULTURE,<br>PLANTATION,<br>AND FORESTRY | <br>GOVERNMENT | <br>COMMERCIAL |
|--|---|--|---|---|



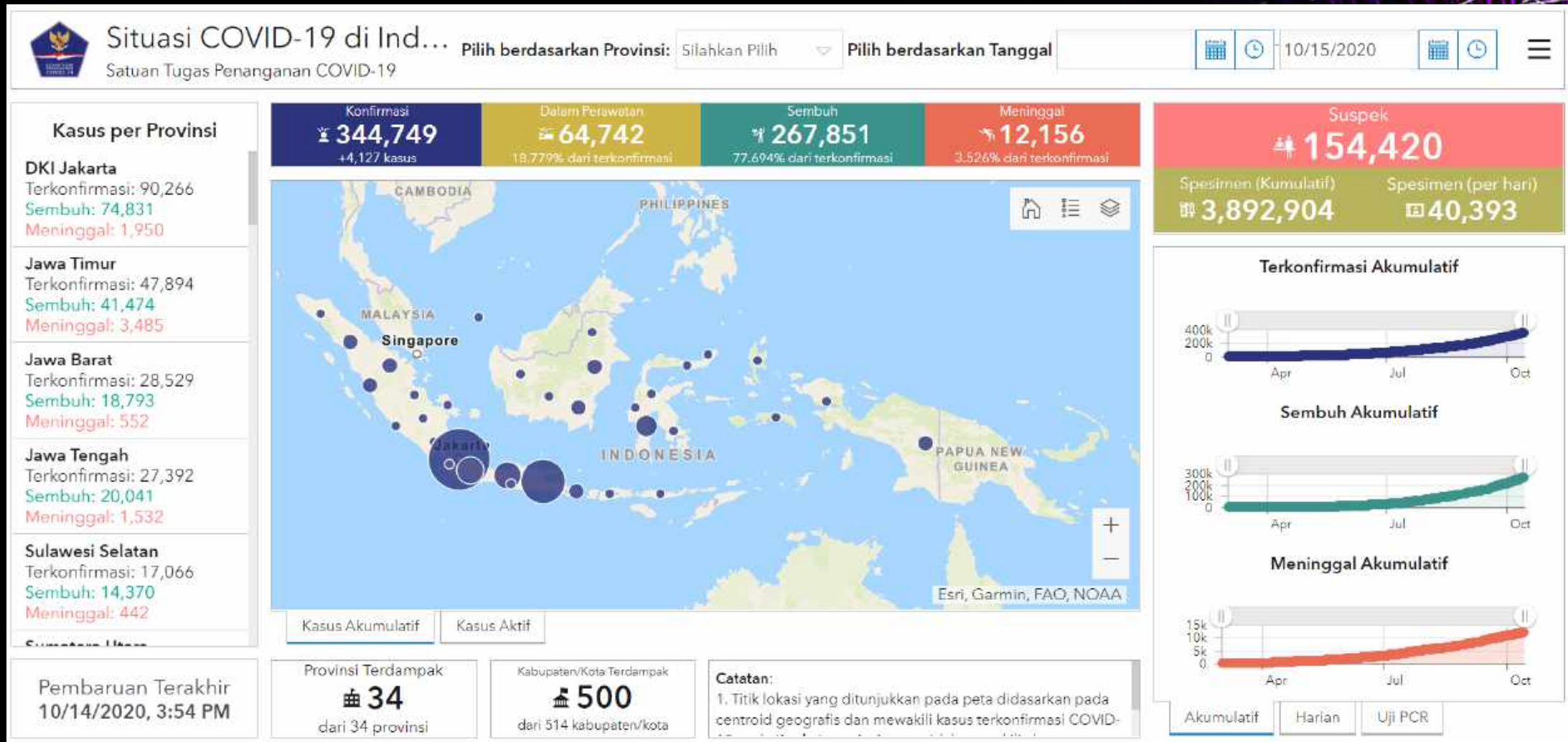
# Objective

We will be looking at how the technology is playing part :

- In increasing overall resilience
- Achieving greater operational effectiveness
- Enhance community engagement
- Strengthen business continuity



# Pemantauan Situasi COVID-19 se-Indonesia



# Community Joins The Fight Against Covid-19



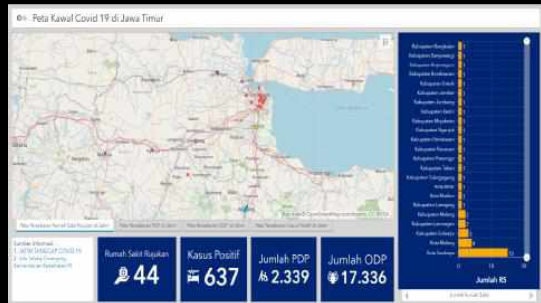
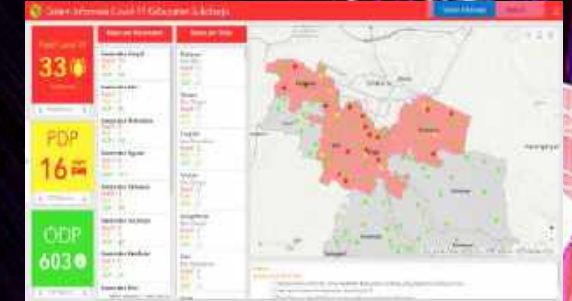
UNSYIAH



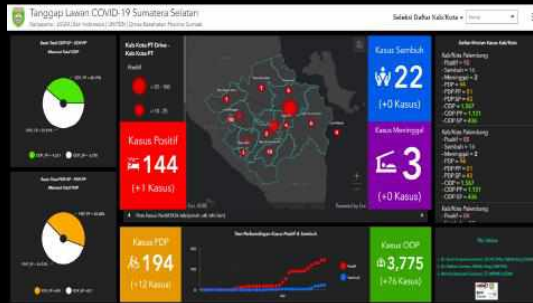
BINUS



UGM



ITS



UIGM



UPI



UB

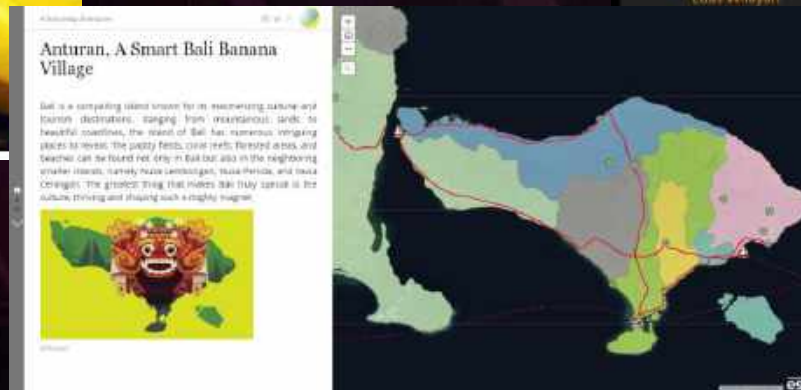
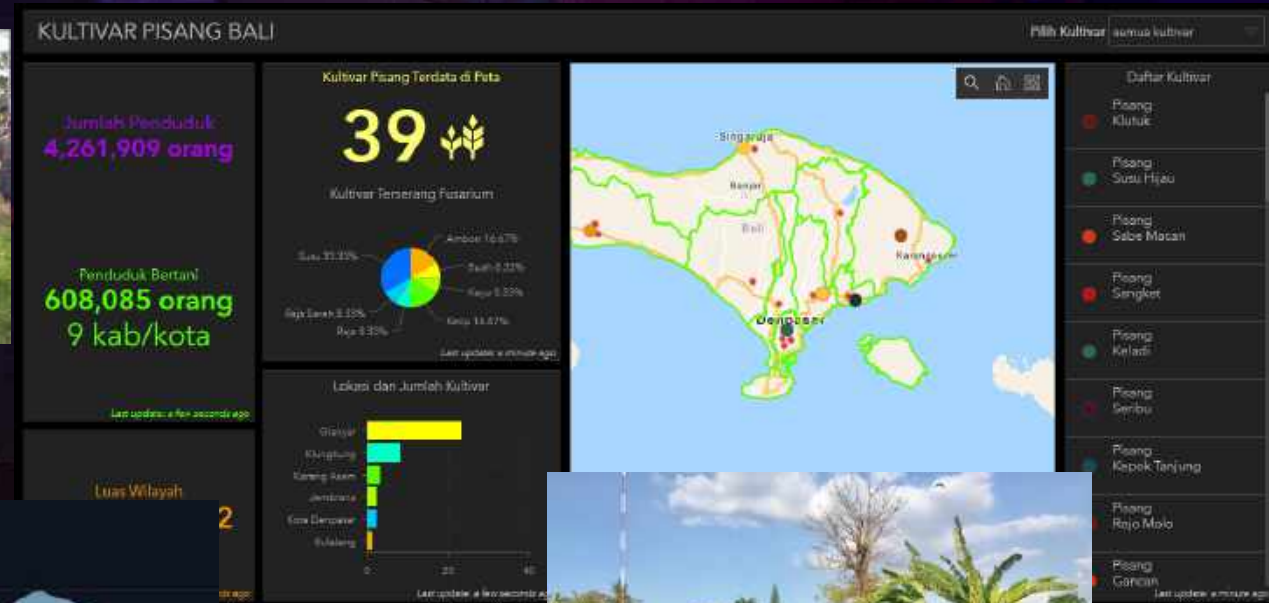
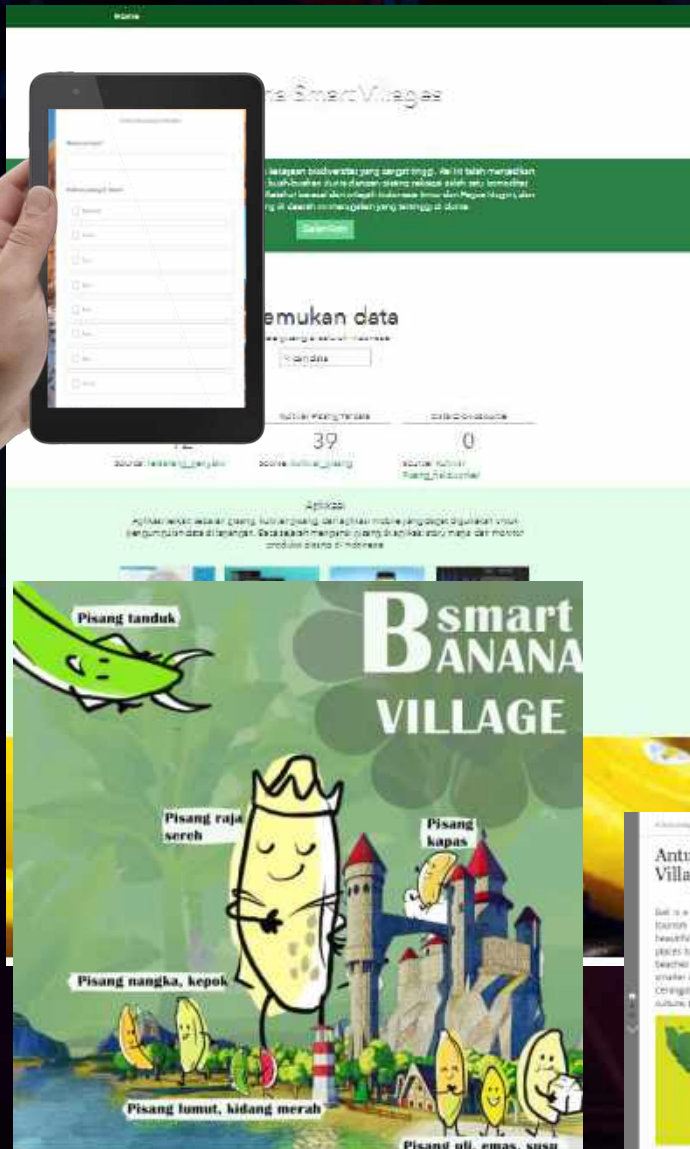


Apa yang telah dilakukan?

1. Pengawasan
2. Pelaporan
3. Analisis

# Community Collaboration : Bali Banana Smart Village

- Bali Banana Smart Village, aka Anturan Village is a pioneer. Uplifting the concept of banana smart village, it has to be able to meet the interests of society, environment, and economy.
- Banana field that is jointly managed by Anturan Village, Buleleng, Bali together with ITB and supported by Balitbu-Indonesian Ministry of Agriculture.



# Smart City : Increasing People's Life Quality



Jakarta Satu  
Pemprov DKI Jakarta



Live Room  
Kota Tangerang



Portal GIS Covid  
Kota Palembang



Bogapeta  
Kabupaten Bogor



Geoportal Data  
Kota Depok

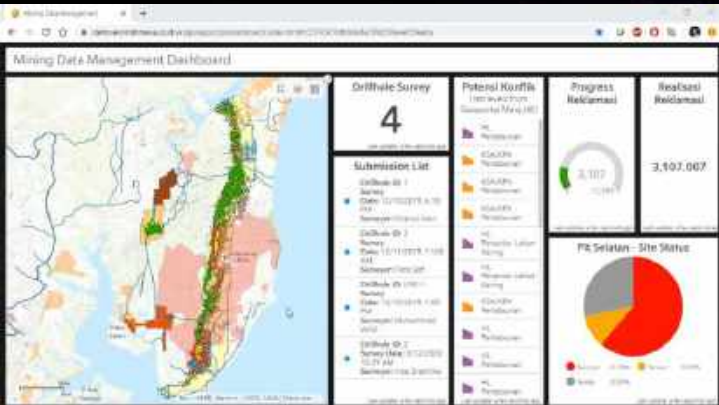


Geoportal Data  
PUPR Maluku Utara

# Mining : Sustainable Operations and Environment



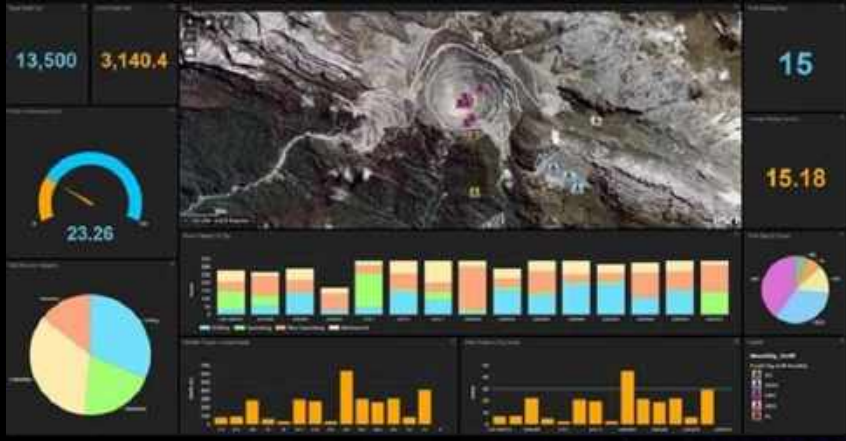
Safety Monitoring



Environment and Exploration Analysis - An Example



Facility Management



Daily Operations Monitoring

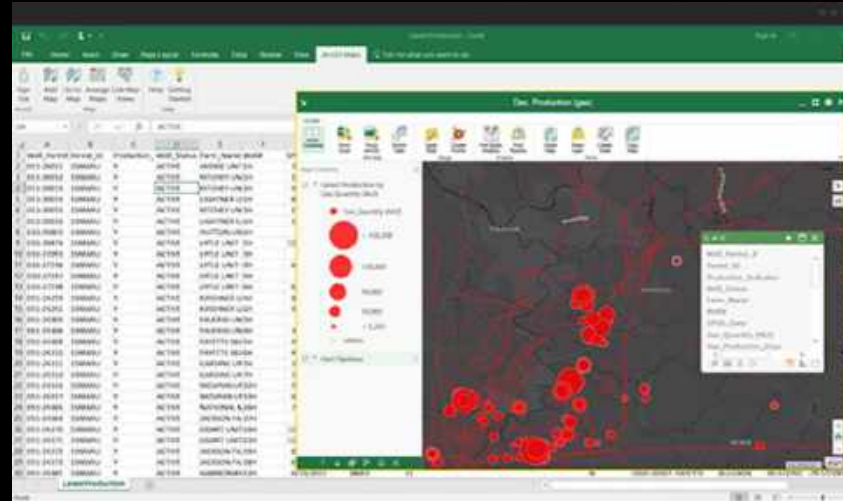




# Oil and Gas: Maximize the Asset



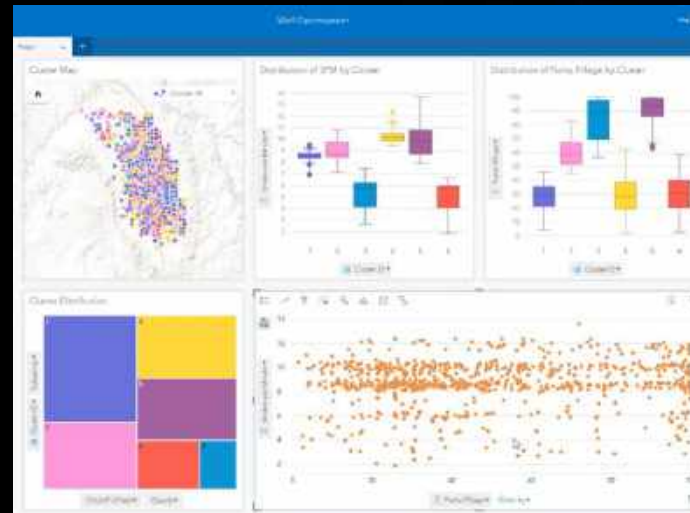
Production Performance



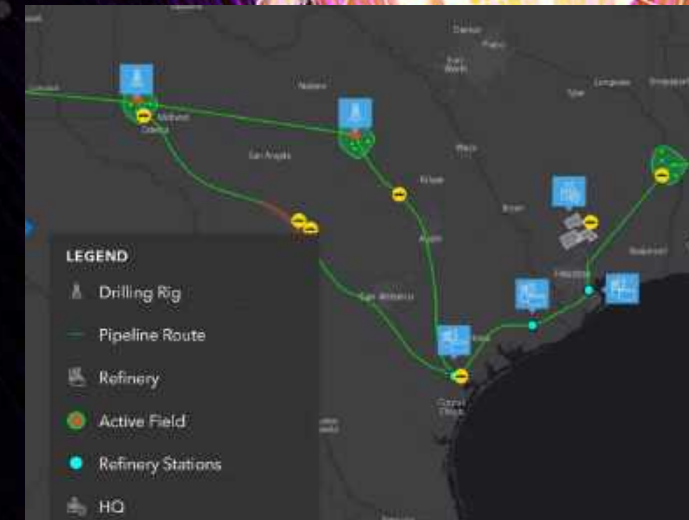
Production Monitoring



Database Management



Well Optimization



Facilities Management

# Plantation: Enhance Operational Efficiencies



Soil analysis



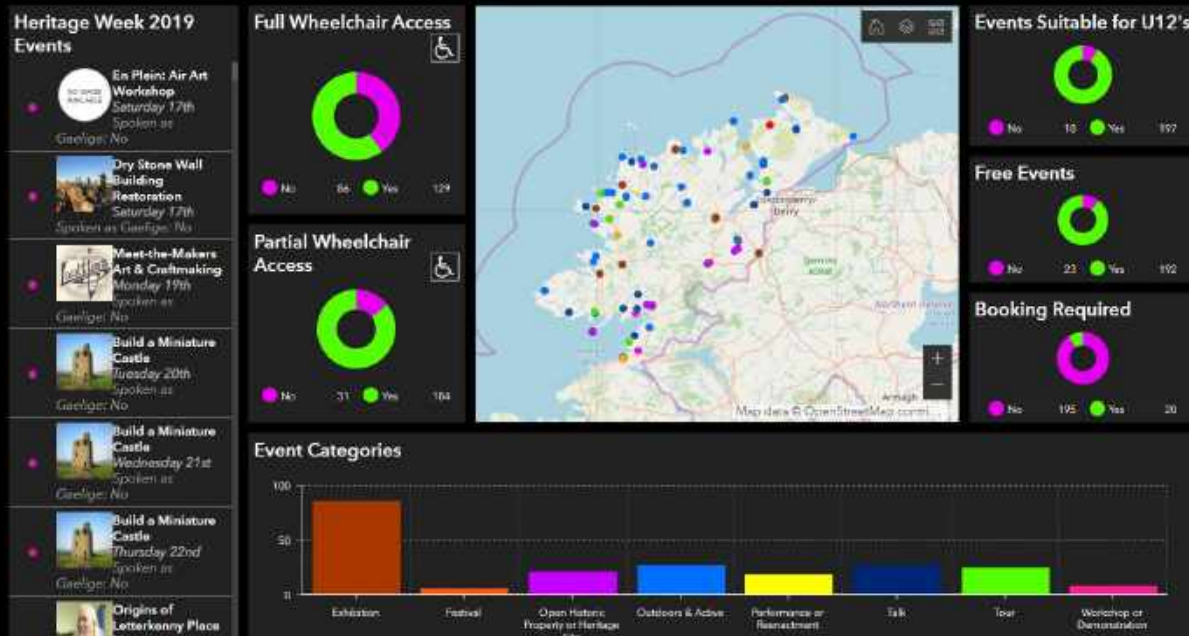
Production Monitoring



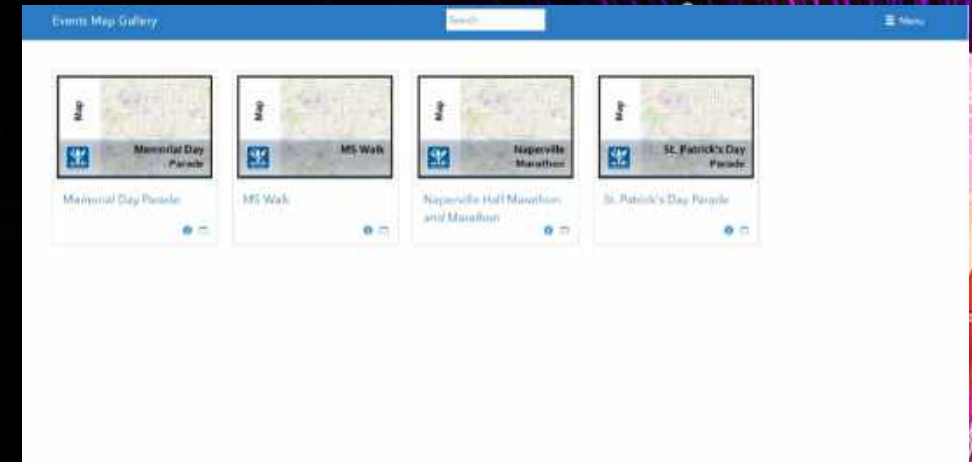
Tree health analysis



# Tourism: Interactive Event Management



Heritage Week Event Dashboard  
Donegal, Ireland

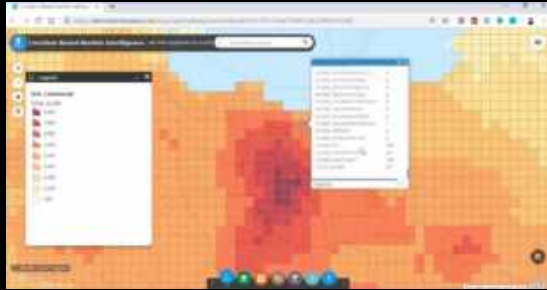


Events Maps Gallery

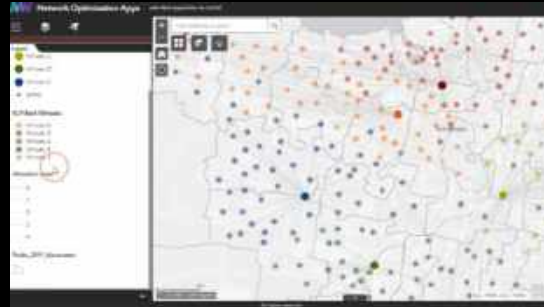


Event Coordination

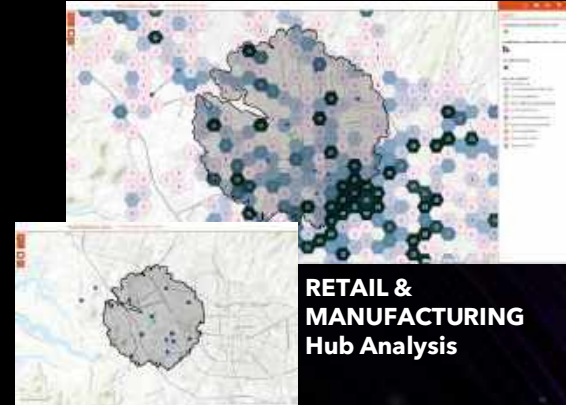
# Commercial: Analytics to Strengthen Business



**RETAIL & MANUFACTURING**  
Site Selection - Grid Analysis



**FINANCIAL SERVICES (BANKING)**  
Network Optimization



**RETAIL & MANUFACTURING**  
Hub Analysis



**FINANCIAL SERVICES (BANKING)**  
Market Potential



**REAL ESTATE**  
Land Management  
Apps



**FINANCIAL SERVICES (BANKING)**  
Example Collateral Apps



**ADVANCED ANALYTICS**  
Retail Location  
Decision Making



**REAL ESTATE**  
Market Development  
Pitchbook



**REAL ESTATE**  
Tenant Billing



# Submission Categories - 1

## Geo-Innovation Award

- Open to intermediate to advanced GIS users, e.g. working within an organisation, a government agency, an educational institute, etc.
- Must be a team of up to three members
- If more than one participant, the award will be presented to the nominated team leader



# Submission Categories - 2

## Spatial Forward Thinkers

- Open to entry-level GIS users or ArcGIS for Personal Use users in education institutions (e.g. Undergraduate, Highschool) and or individual users
- Open to single participants only



# Prizes

- An opportunity to present your winning project to Indonesia's growing geospatial community
- Media coverage
- A trophy and winner certificate
- An ArcGIS for Personal Use Licence
- Esri Indonesia official merchandise



**1 Winner on Geoinnovation Award** on the highest scores across industries.

**1 Winner on Geoinnovation Award for each Industry/Sector Winner :**

- Geoinnovation Award for Commercial
- Geoinnovation Award for Plantation & Forestry
- Geoinnovation Award for Oil & Gas
- Geoinnovation Award for Mining
- Geoinnovation Award for Smart City (Government)

**1 Winner** on **Spatial Forward Thinkers**

**1 Winer** on **Map Gallery most voted winner via social media**



# Submission mechanism

All submissions strongly recommended to use [ArcGIS Storymap](#) to present their innovative ideas

All submissions are required to feature the following points:

1. Title
2. Introduction
3. Project goals
4. Esri solution implemented to achieve project goals and overcome challenges
5. Results achieved, outcomes and benefits gained from attaining the project goals

Additional GeInnovation Category submission required to submit Map Poster for Most Voted Map Gallery Poster via Social Media





# Timeline

Submission Period  
30 September - 20  
November



Finalist  
Announcement  
1 Dec



Shortlisting  
Finalists  
23-27 Nov

A circular inset showing a table with columns for 'Status' and 'National and provincial capital'. The table lists several entries with numerical values.

| Status                          | National and provincial capital |
|---------------------------------|---------------------------------|
| Provincial capital              | 24,808,212                      |
| National and provincial capital | 23,874,209.01                   |
| Provincial capital              | 22,895,826.01                   |
| Provincial capital              | 21,624,219.00                   |
| National and provincial capital | 19,265,634.51                   |
| Provincial capital              | 18,574,217.00                   |
| Provincial capital              | 10,427,766.00                   |
| National and provincial capital | 10,449,217.00                   |
| National and provincial capital | 10,311,217.00                   |

Map Voting on Poster  
via Social Media  
1 Dec



Finalist  
Presentation  
8-12 Dec



Winner  
Announcement  
21 Dec



# Judges

- Dr. Achmad Istamar, CEO Esri Indonesia
- Prof. Dr. Hasanuddin Zainal Abidin, ITB
- Canserina Kurnia, Senior Solution Engineer, Education, Esri Inc



Share your innovative ideas now.

Thank you!

